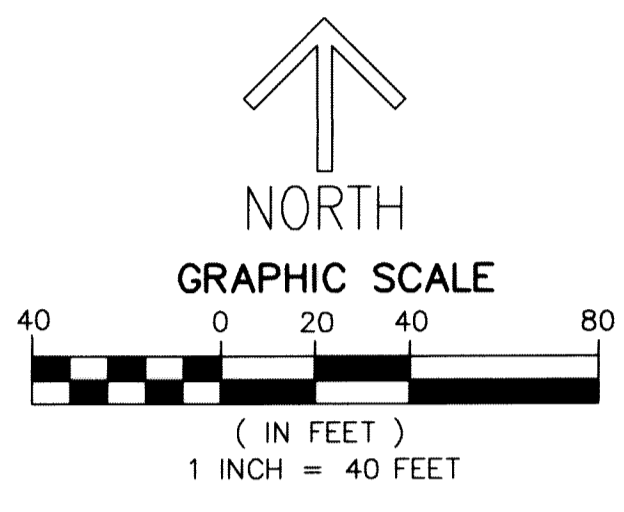
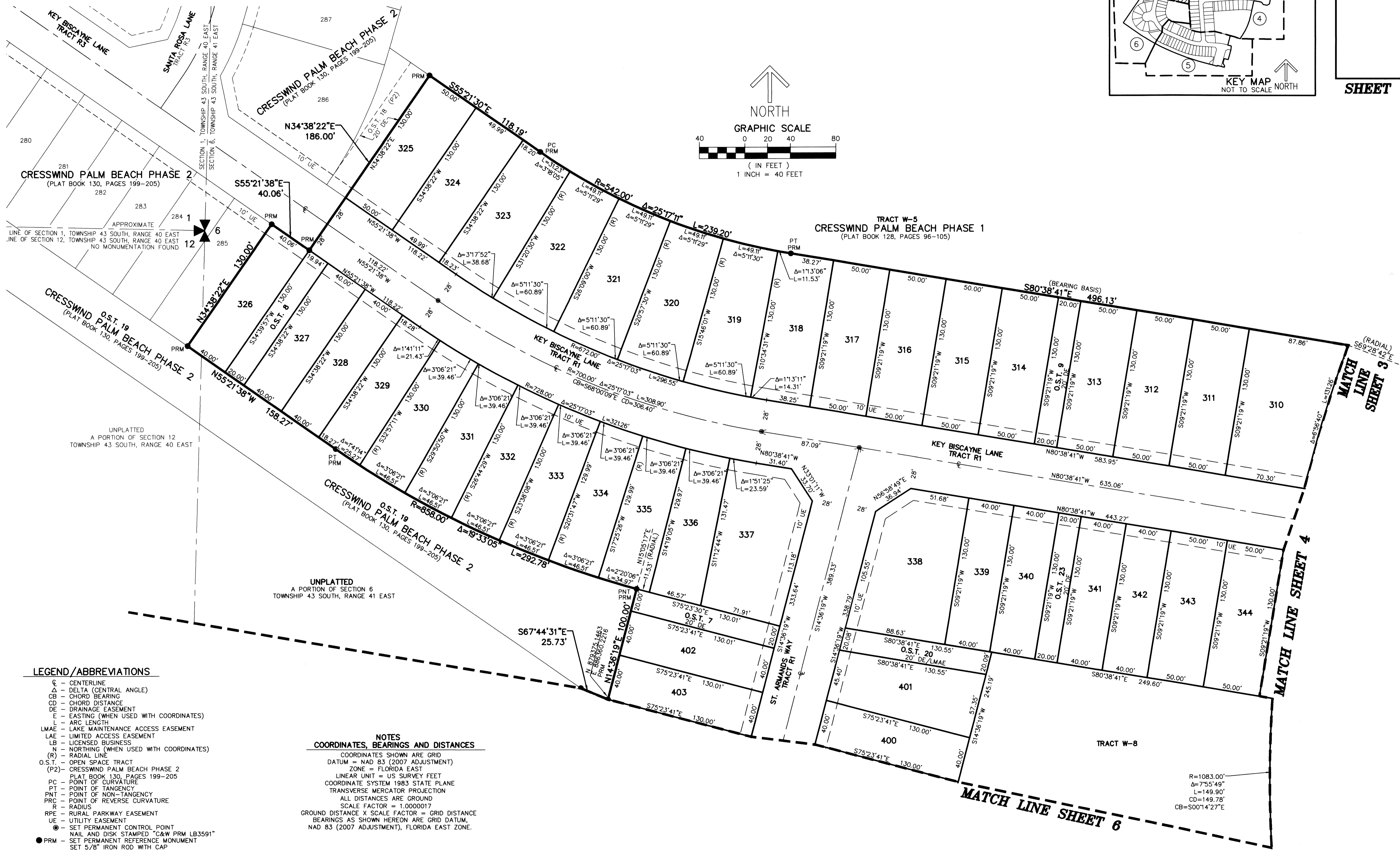
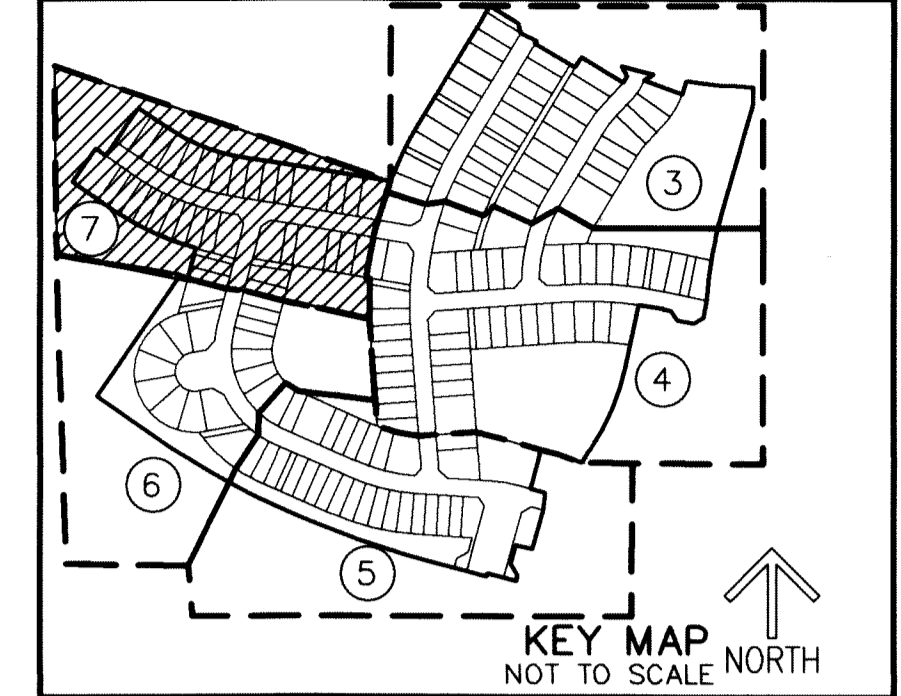


THIS INSTRUMENT PREPARED BY
 DAVID P. LINDLEY
 OF
CAULFIELD & WHEELER, INC.
 SURVEYORS - ENGINEERS - PLANNERS
 7900 GLADES ROAD, SUITE 100
 BOCA RATON, FLORIDA 33434 - (561)392-1991
 CERTIFICATE OF AUTHORIZATION NO. LB3591

CRESSWIND PALM BEACH PHASE 3

BEING A REPLAT OF A PORTION OF O.S.T. 20, CRESSWIND PALM BEACH PHASE 2,
 AS RECORDED IN PLAT BOOK 130, PAGES 199 THROUGH 205 OF THE PUBLIC RECORDS OF PALM BEACH COUNTY, FLORIDA,
 AND PORTIONS OF SECTIONS 6 AND 7, TOWNSHIP 43 SOUTH, RANGE 41 EAST,
 AND A PORTION OF SECTION 12, TOWNSHIP 43 SOUTH, RANGE 40 EAST, CITY OF WESTLAKE, PALM BEACH COUNTY, FLORIDA.



- LEGEND/ABBREVIATIONS**
- CL - CENTERLINE
 - Δ - DELTA (CENTRAL ANGLE)
 - CB - CHORD BEARING
 - CD - CHORD DISTANCE
 - DE - DRAINAGE EASEMENT
 - E - EASTING (WHEN USED WITH COORDINATES)
 - L - ARC LENGTH
 - LMAE - LAKE MAINTENANCE ACCESS EASEMENT
 - LAE - LIMITED ACCESS EASEMENT
 - LB - LICENSED BUSINESS
 - N - NORTHING (WHEN USED WITH COORDINATES)
 - (R) - RADIAL LINE
 - O.S.T. - OPEN SPACE TRACT
 - (P2) - CRESSWIND PALM BEACH PHASE 2
 - PC - POINT OF CURVATURE
 - PT - POINT OF TANGENCY
 - PNT - POINT OF NON-TANGENCY
 - PRC - POINT OF REVERSE CURVATURE
 - R - RADIUS
 - RPE - RURAL PARKWAY EASEMENT
 - UE - UTILITY EASEMENT
 - - SET PERMANENT CONTROL POINT
 - - NAIL AND DISK STAMPED "C&W PRM LB3591"
 - - SET PERMANENT REFERENCE MONUMENT
 - - SET 5/8" IRON ROD WITH CAP STAMPED "C&W PRM LB3591"
 - - FOUND PERMANENT REFERENCE MONUMENT
 - - FOUND PERMANENT REFERENCE MONUMENT 4" x 4" x 24" CONCRETE MONUMENT WITH DISK STAMPED "PRM LB7768"

NOTES
COORDINATES, BEARINGS AND DISTANCES
 COORDINATES SHOWN ARE GRID
 DATUM = NAD 83 (2007 ADJUSTMENT)
 ZONE = FLORIDA EAST
 LINEAR UNIT = US SURVEY FEET
 COORDINATE SYSTEM 1983 STATE PLANE
 TRANSVERSE MERCATOR PROJECTION
 ALL DISTANCES ARE GROUND
 SCALE FACTOR = 1.0000017
 GROUND DISTANCE X SCALE FACTOR = GRID DISTANCE
 BEARINGS AS SHOWN HEREON ARE GRID DATUM,
 NAD 83 (2007 ADJUSTMENT), FLORIDA EAST ZONE.